

Data Flow to BioCASE Wrapper

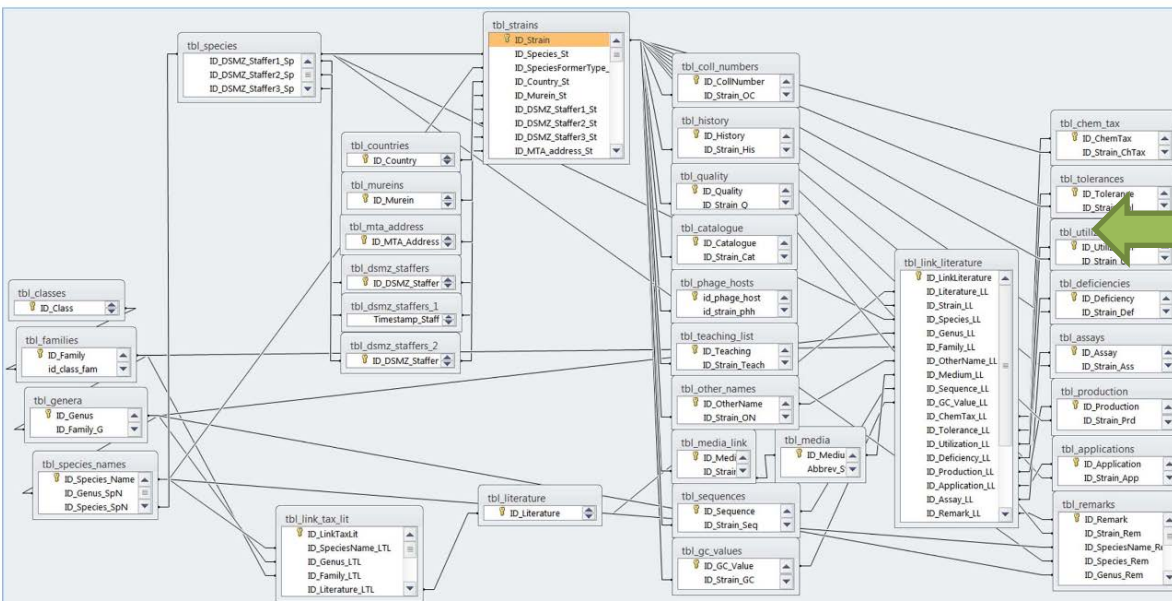
Boyke Bunk, Carola Söhngen, Doro Gleim




DSMZ DB

xml according ABCD schema	ABCD 2.0 (using BioCAsE V.3.5)
BioCAsE Wrapper Version installed, description of dataflow	V. 3.5, underlying db: MySQL cache DB with information from the Catalogue of the DSMZ culture collection
xml according DarwinCore schema	not yet mapped, planned via BioCAsE V.3.5
xml according EML schema	-
xml according other schemas	-
txt, CSV export	custom exports on request of collaboration partners (+)
Notes	Mapped fields listed via BioCAsE wrapper response on DSMZ_prokarya

Operating System Server	MySQL Backend, MS Access Frontend
Database system	MySQL
User rights management	MySQL-Server Specific
Client	MS Access frontend
GIS functionalities	-
GUIs for data import	Individual import/export txt, CSV, XLS, MySQL
GUIs for data export/reports	Exports/Reports via Access frontend (CSV, XLS, XML)
GUI language	english
Open access	-
Open source	-
Licenses	-
Information model online	Data model
State of development	ongoing
Code language, developer platform	SQL, MS Access
User manual	File:Manual for the DSMZ Microbiology Database.pdf
Training	on demand



DSMZ DB - BioCASE

xml according ABC schema	ABCD 2.0 (using BioCASE V.3.5)
BioCASE Wrapper Version installed, description of dataflow	V. 3.5, underlying db: MySQL cache DB with information from the Catalogue of the DSMZ culture collection
xml according DarwinCore schema	not yet mapped, planned via BioCASE V.3.5
xml according EML schema	-
xml according other schemas	-
txt, CSV export	custom exports on request of collaboration partners (+)
Notes	Mapped fields listed via BioCASE wrapper response on DSMZ_prokarya 

BioCASE Provider Software 3.5

Start

Welcome to the BioCASE provider software entrance page. This is *BPS version 3.5*. Use the following links to administer or access the data of this data provider.

Documentation



Check the PyWrapper Wiki to find tutorials on installation, configuration, mapping, debugging, and other useful tips.

Config Tool

Configure new datasources, general options, the querytool, statistics, etc.

Utilities

Several other utilities useful when managing your data provider software.

Query Tool

Query this datasource using a generic software that works with any database.

Report a Bug

If you find a bug, please send us a short message.

DataSources

Each data source in a BioCASE service represent a database mapped to one or more conceptual schemas (like Darwin Core or ABCD). Click on its name to get more information about each of them and to access the data.

- [DNA_Bank](#)
- [DSMZ_fungi](#)
- [DSMZ_plant_viruses](#)
- [DSMZ_plant_cell_lines](#)
- [DSMZ_prokarya](#)
- [GSPB_prokarya](#)
- [GBF_myxococcales](#)

Powered by: 

Wrapper:

http://biocase.dsmz.de/wrappers/biocase//pywrapper.cgi?dsa=DSMZ_prokarya



Leibniz-Institut • DSMZ-Deutsche Sammlung von Mikroorganismen und Zellkulturen GmbH

Datasource: *DSMZ_prokarya*

Start » Datasource *DSMZ_prokarya*

Access point:

This is the wrapper URL needed to access your datasource service from outside.

- http://biocase.dsmz.de/wrappers/biocase//pywrapper.cgi?dsa=DSMZ_prokarya

Useful links:


- **QUERY** this datasource with the QueryTool
- **CONFIGURE** this datasource with the graphical configtool
- **TEST and DEBUG** this datasource using the manual query forms

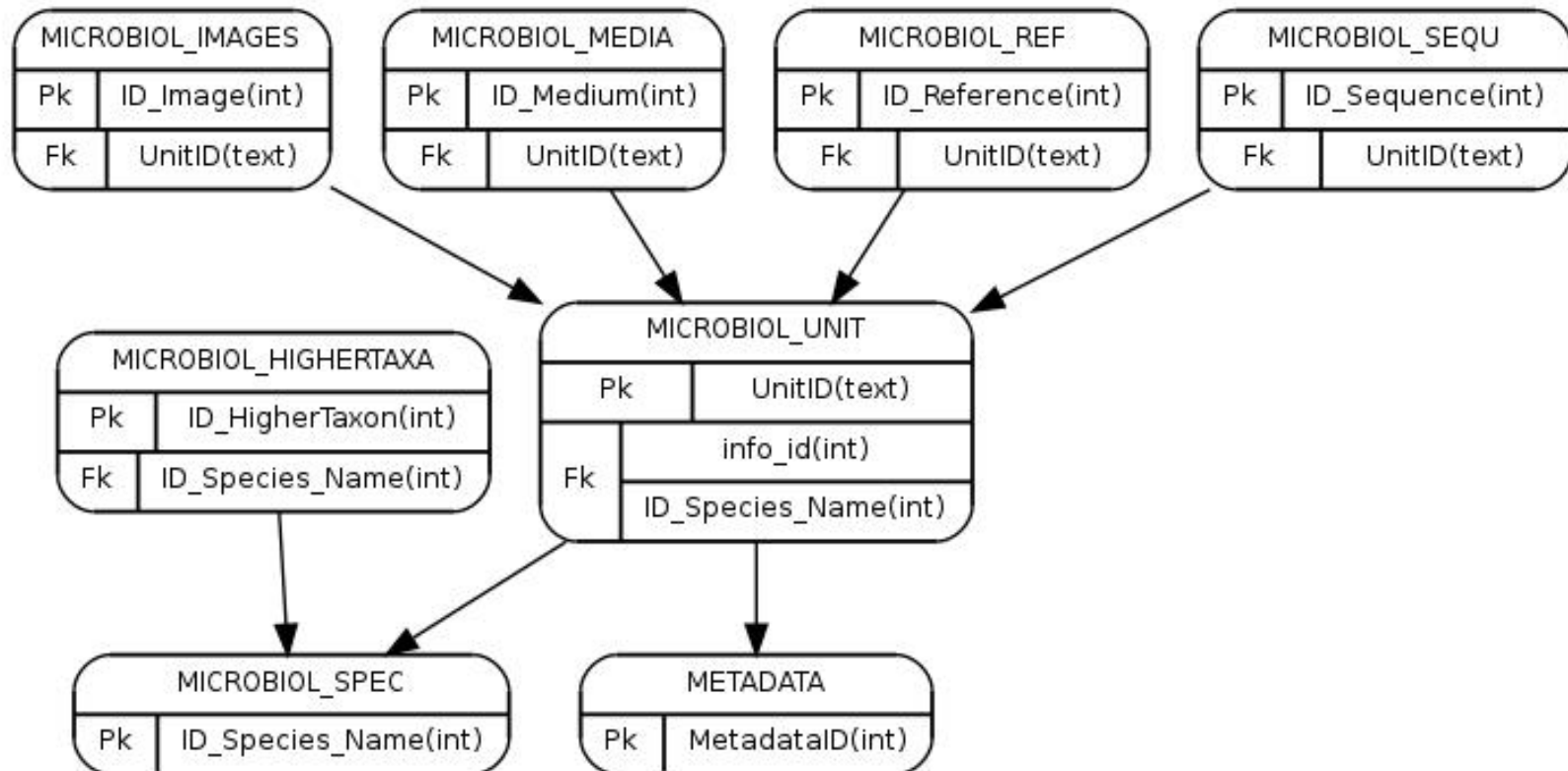
BioCAsE Configuration Tool - *DSMZ_prokarya*

[Home](#) | [Overview](#) | [Settings](#) | [DB connection](#) | **DB structure** | [Archive](#) | [QueryForms](#) | [Help](#) | [Report a Bug](#)

Database Structure



Use this tool to describe your database structure, so that the software knows how to query your database.

DB Connection status: **OK** 



Schemas

These are the XML schemas supported by this datasource and the number of elements mapped.
Click on the name to edit the mapping:

 **ABCD_2.06.xml**: 95 concepts mapped from 966 of NS <http://www.tdwg.org/schemas/abcd/2.06> 

1 XML archive(s) for this schema, last modified on 2014-03-11.

ABCEFG_2.06 ▾

Transfer

mappings from ABCD_2.06.xml to new schema

Map your DB to a new schema: --select-- ▾

Recycle bin: Restore a schema mapping to reactivate the schema, or press purge to permanently delete the file.
Recycle bin is empty.

DarwinCore Archives

1 DarwinCore archive(s) for this schema, last modified on 2014-03-11.

You can create, remove or update DarwinCore Archives on the [Archive](#) page.

Existing Archives

Schema/File Name	Recs	Drop	Last modified
- ABCD_2.06			Log
DSMZ Prokarya Collection Catalogue.ABCD_2.06.zip	19,358		14-03-11 08:49
- DwCA			Log
DSMZ Prokarya Collection Catalogue.DwCA.zip	19,358		14-03-11 08:49



Prof. Dr. Jörg Overmann

Data mobilization & databases

Dr. Carola Söhngen

Dr. Boyke Bunk

Dr. Dorothea Gleim

IT-Specialists & Programming

Adam Podstawka

Cezar Pendarovski

Digitization

Scientific coworkers & student
assistants

Acknowledgements:

Prof. Dr. Hans Reichenbach

Prof. Dr. Joachim Wink

The curators of the DSMZ



Federal Ministry
of Education
and Research

01 LI 1001 C: Joint research
project "GBIF-D:
Kompetenzentren
innovativer
Datenmobilisierung"

